



Hollister

“The work processes are significantly simplified and smarter.”

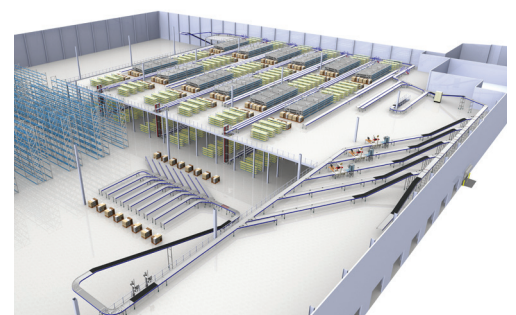
Hollister, the independent American developer, manufacturer and seller of medical devices, was forced to realize an expansion due to success. Hollister chose to build a new European Distribution Center in Oud Gastel, which has three times the capacity of its former facility in Etten-Leur. Inther Group was commissioned to realize the intralogistics part.

The choice for a suitable new location for the realization of the expansion became an extension of the stay in West-Brabant. The starting points were the staff that could move along and the central location of the logistics hotspot between the port of Antwerp and Rotterdam. Job Sonke also states: “We have, among other things, a 24 hour delivery time to the majority of our distributors in Europe with the exception of Spain and Italy. This fact ensures that you can not look at many other locations outside the Netherlands. An option would be express shipping, but that is far too expensive.”

In February 2018, the first customer shipments from the new facility were realized. The entire distribution center has been operational since April of that same year.

Two kilometers of conveyor technology

For the intralogistics of this more than 30,000 square meter warehouse, Inther has been responsible for the installation of the Warehouse Control System and two kilometers of conveyor systems. In addition, six print & apply machines, two box erecting



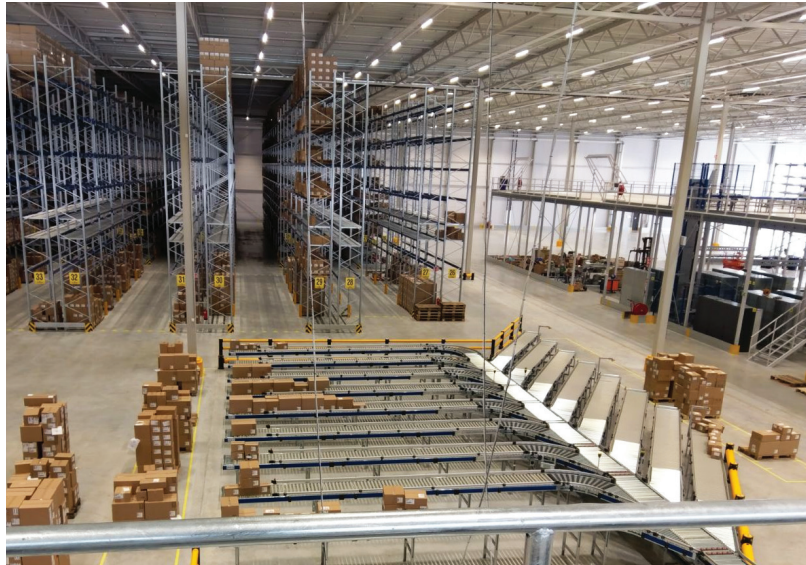


machines, two in-line weighing scales, three semi-automatic box sealers and two lifts have been implemented. The process ends with a fishbone sorter. Cartons are sorted to the correct lane based on its shipping criteria.

Possibility of expansion

Inther has distributed the entire system over both the ground floor and the 3,560 m² mezzanine. Sonke: “With respect to Etten-Leur, we now have a much better working and larger conveyor system. The things that we have now changed compared to the old situation are not extremely innovative in terms of logistics, but for us, the work processes are considerably simplified and smarter.”

Fishbone sorter



Technology: double-sided pop-up sorting, where cartons are dynamically lined out to the correct side right before sorting.

Zone picking workstations



Cartons are transported to one of the 16 ‘zone picking workstations’, where they receive the needed articles and follow their path to the next workstation or towards the packing process.

SOLUTIONS

- Warehouse Control System
- Two kilometers of conveyor technology
- Print & Apply
- Box erecting machines
- In-line weighing scales
- Semi-automatic box sealers
- Lifts

Job Sonke, Manager European Distribution Center at Hollister:

“We now have a much better working and larger conveyor system.”

